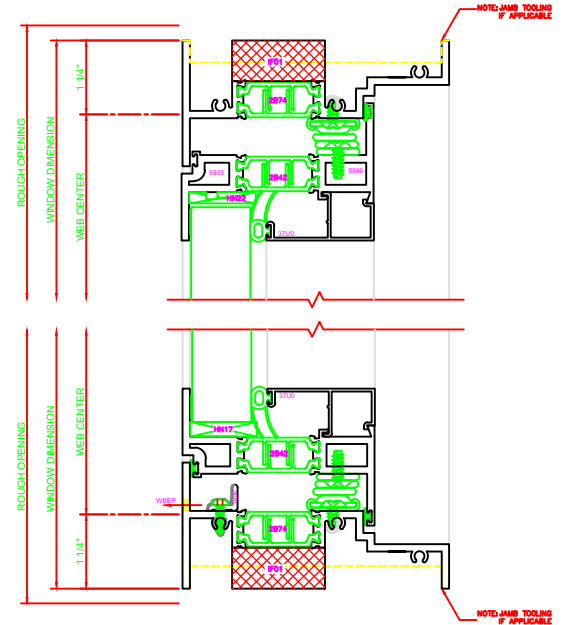


430	JAMB
	SERIES: 450X CASEMENT IN 4-BAR ARMS

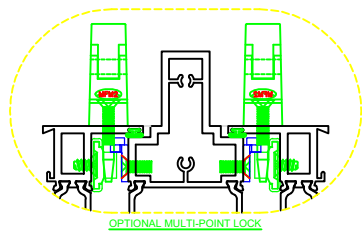
632	MEETING RAIL
	SERIES: 450X C./C.L.

130	HEAD
	SERIES: 450X CASEMENT IN 4-BAR ARMS

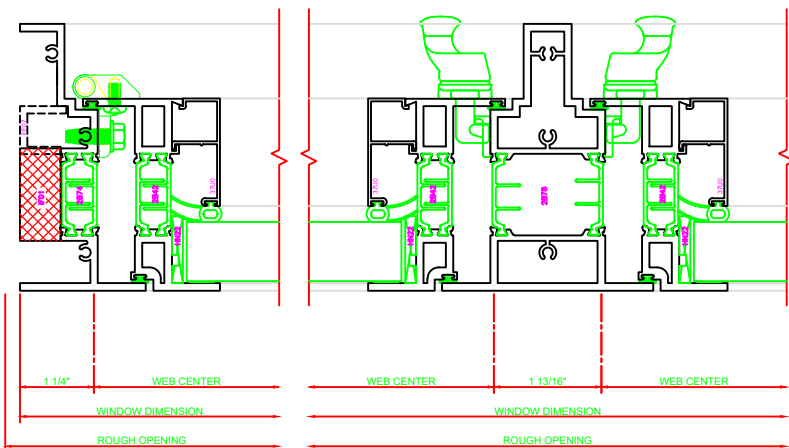
230	SILL
	SERIES: 450X CASEMENT IN 4-BAR ARMS



## 4-BAR ARMS BUTT HINGE



**ERECTOR NOTE:**  
THE HINGED JAMB FRAME SHALL BE INSTALLED PLUMB. ALL HINGES SHALL BE SECURELY BLOCKED AND ANCHORED TO THE CONDITION THROUGH THE HINGES OR AS CLOSE AS POSSIBLE TO THE HINGES.



432	JAMB
	SERIES: 450X CASEMENT IN BUTT HINGE

632	MEETING RAIL
	SERIES: 450X C./C.L.

131	HEAD
	SERIES: 450X CASEMENT IN BUTT HINGE

231	SILL
	SERIES: 450X CASEMENT IN BUTT HINGE

